

# AGENDA SUPPLEMENT (1)

**Meeting:** Southern Area Planning Committee

**Place:** The Pump Room - The Old Fire Station Enterprise Centre, 2 Salt Lane,  
Salisbury, SP1 1DU

**Date:** Thursday 27 July 2023

**Time:** 3.00 pm

---

**The Agenda for the above meeting was published on 18 July 2023. Additional documents are now available and are attached to this Agenda Supplement.**

Please direct any enquiries on this Agenda to Lisa Alexander of Democratic Services, County Hall, Bythesea Road, Trowbridge, direct line 01722 434560 or email [lisa.alexander@wiltshire.gov.uk](mailto:lisa.alexander@wiltshire.gov.uk)

Press enquiries to Communications on direct lines (01225)713114/713115.

This Agenda and all the documents referred to within it are available on the Council's website at [www.wiltshire.gov.uk](http://www.wiltshire.gov.uk)

---

## **Part I – Presentation Slides (Pages 3 - 30)**

DATE OF PUBLICATION: 26 July 2023
-----------------------------------

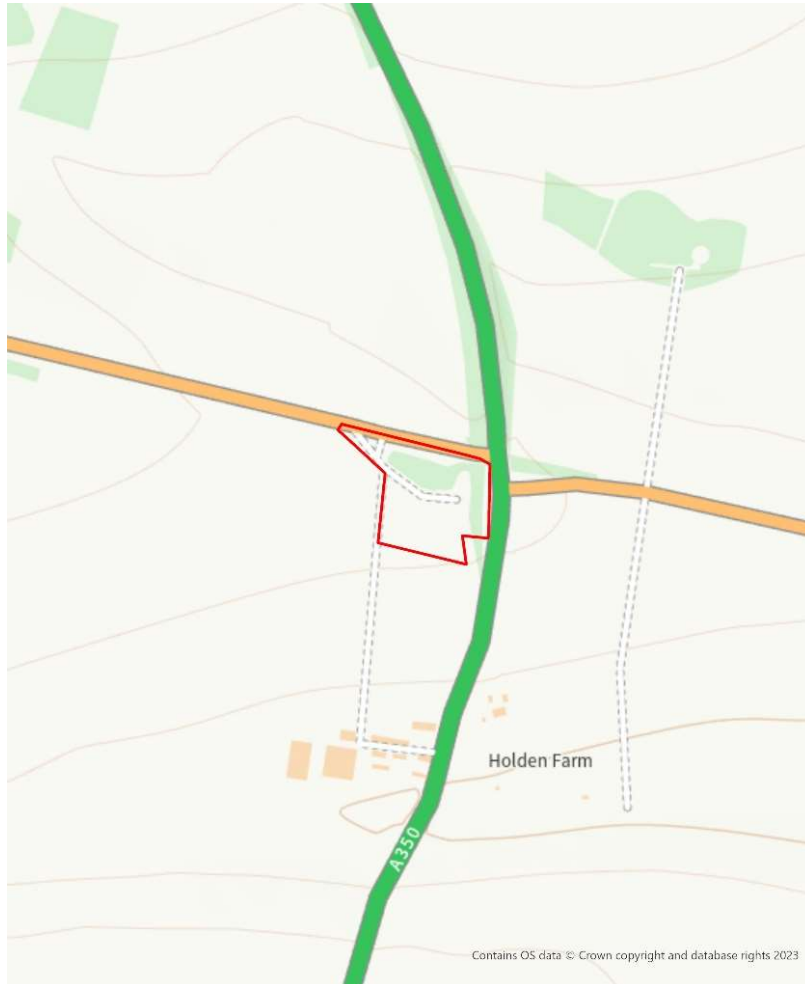
This page is intentionally left blank

# Southern Area Planning Committee

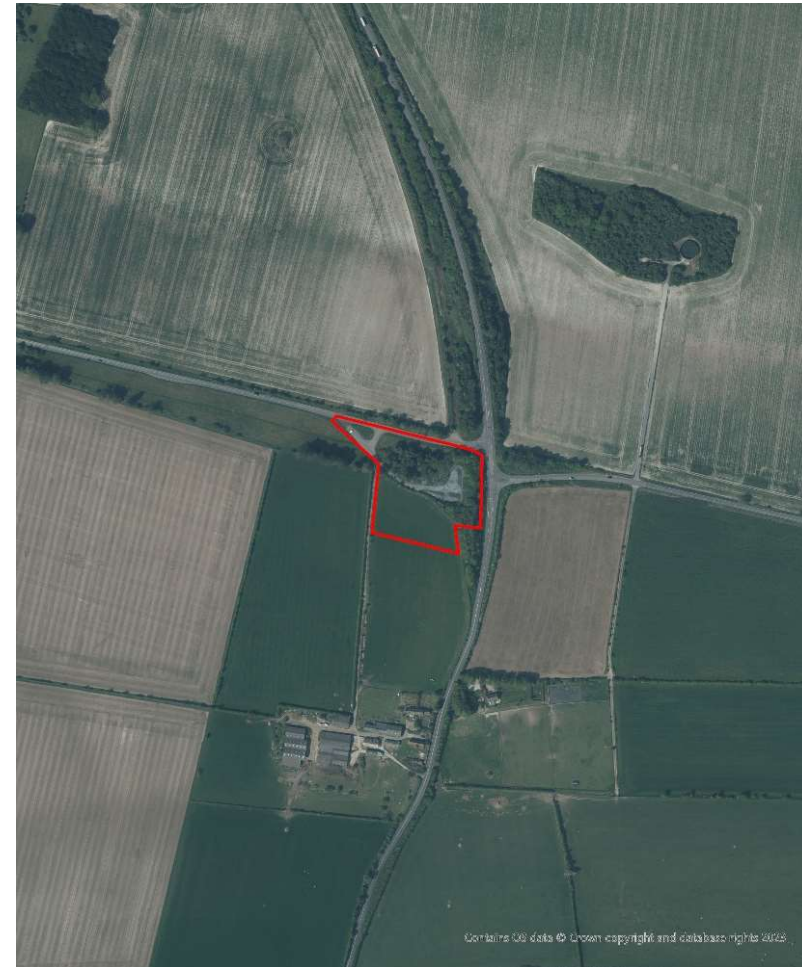
27<sup>th</sup> July 2023

**7a) PL/2022/05051 - Land North of Holden Farm, Hindon Stagger, East Knoyle, Salisbury, SP3 6DE**  
Proposed highway depot for Wiltshire Council comprising of one covered building with associated external yard area, to include 1000T salt store, 4no. vehicle bays, vehicle circulation area and two storey welfare accommodation. External yard area to include a vehicle wash down, weighbridge, fuel filling facilities and a battery store with ecological water treatment system to south of site  
**Recommendation: Approved with Conditions**

Page 4



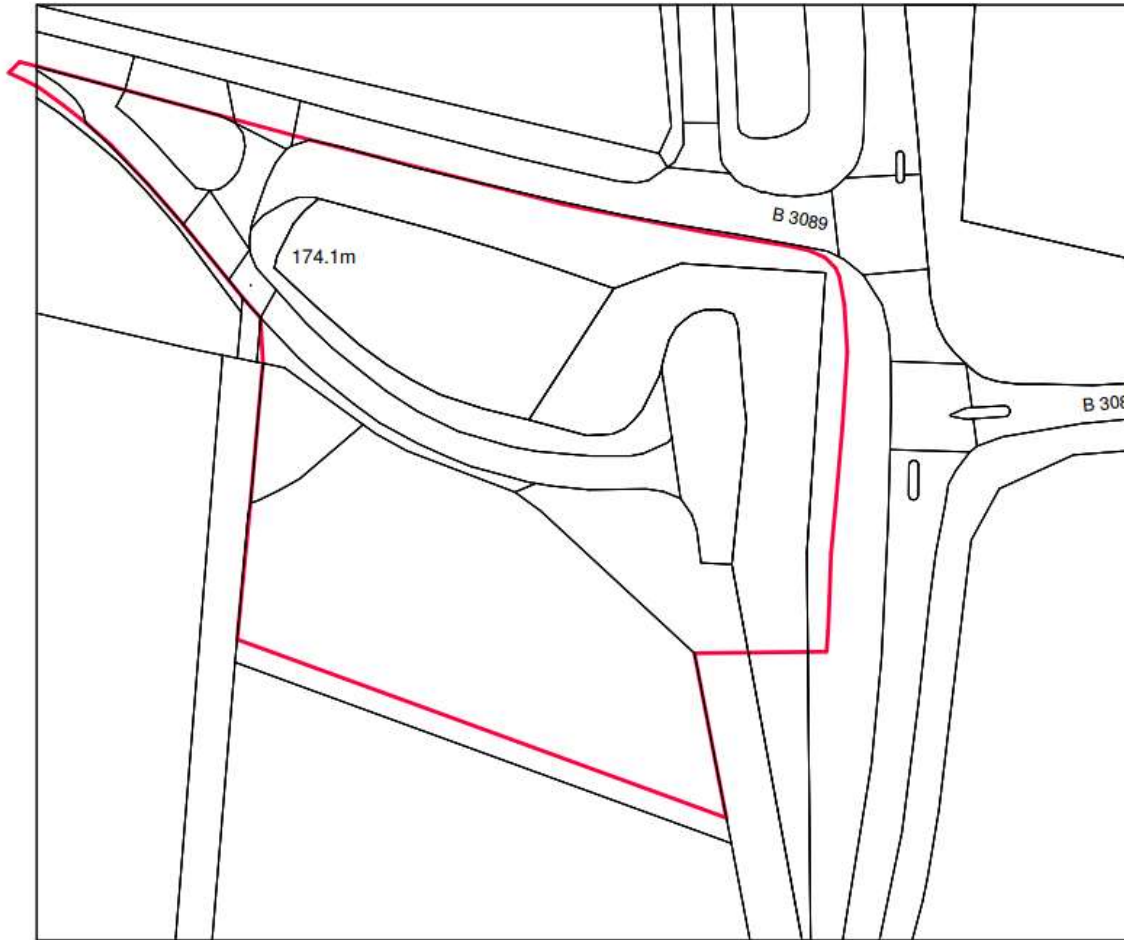
Site Location Plan



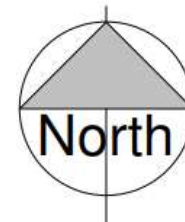
Aerial Photography

# Location plan

Page 5



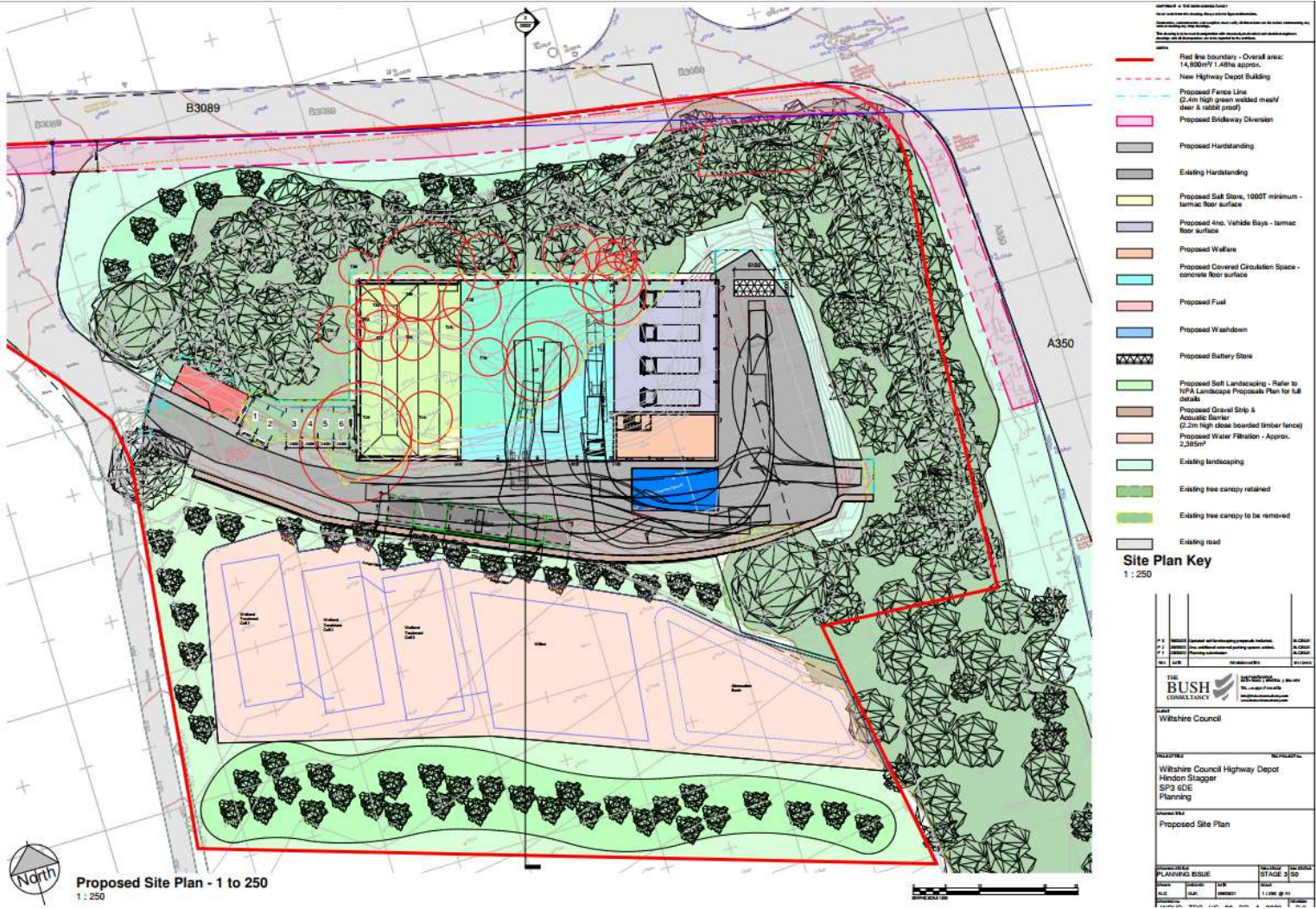
Ordnance Survey, (c) Crown Copyright 2014. All rights reserved. Licence number 100022432





# Proposed site plan

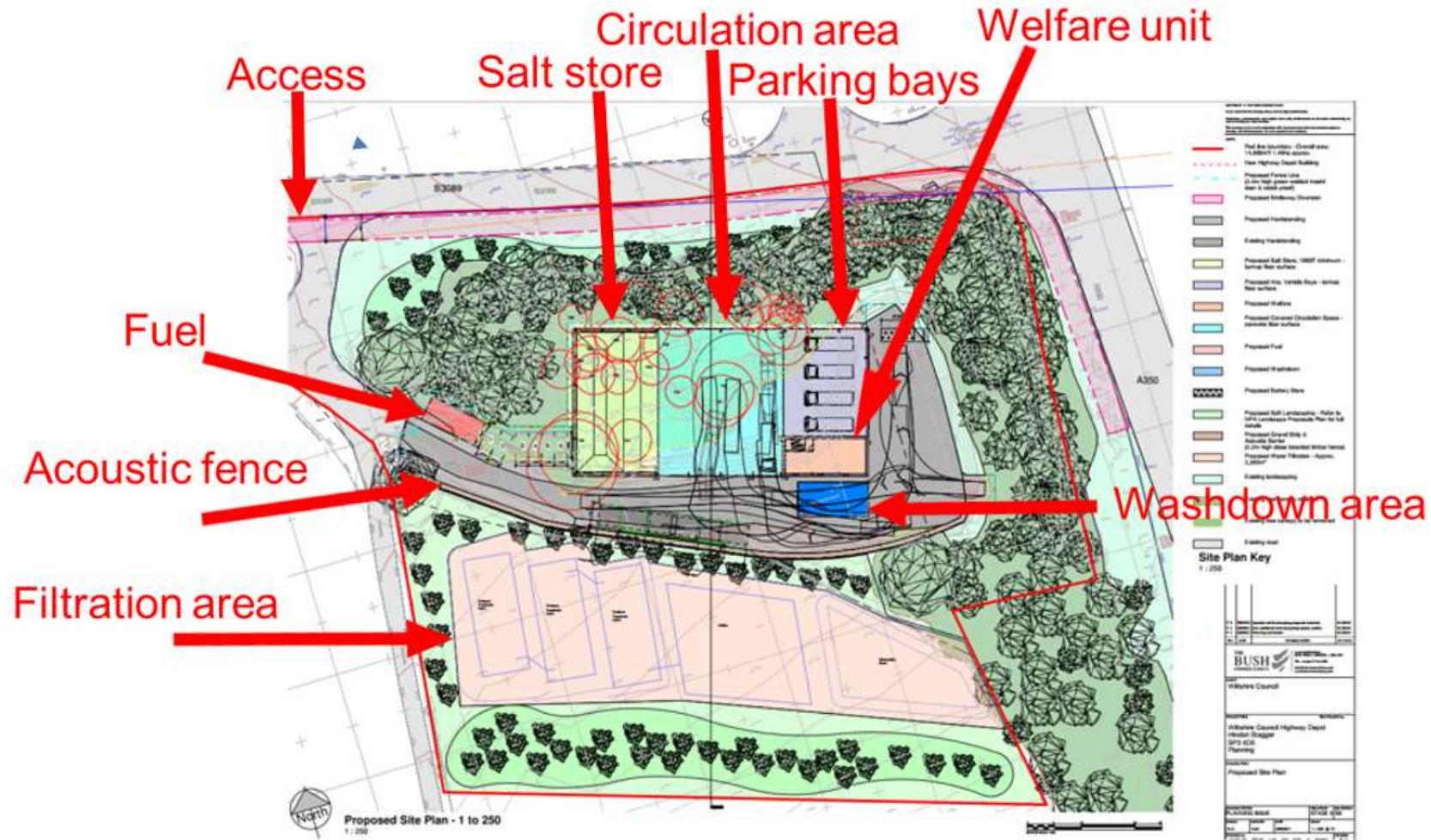
Page 6



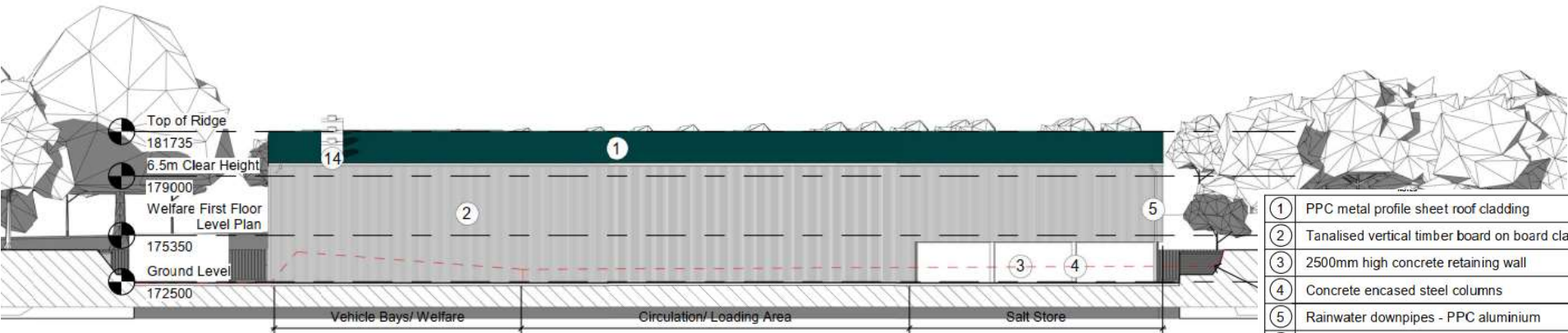
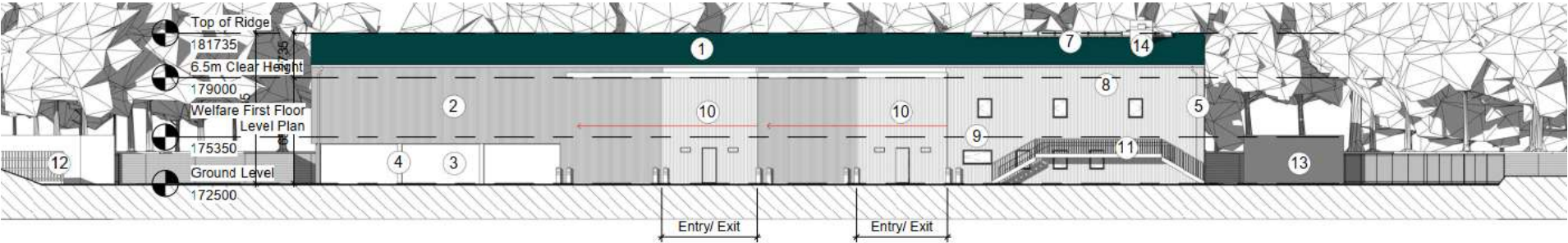


# Proposed site plan annotated

Page 7



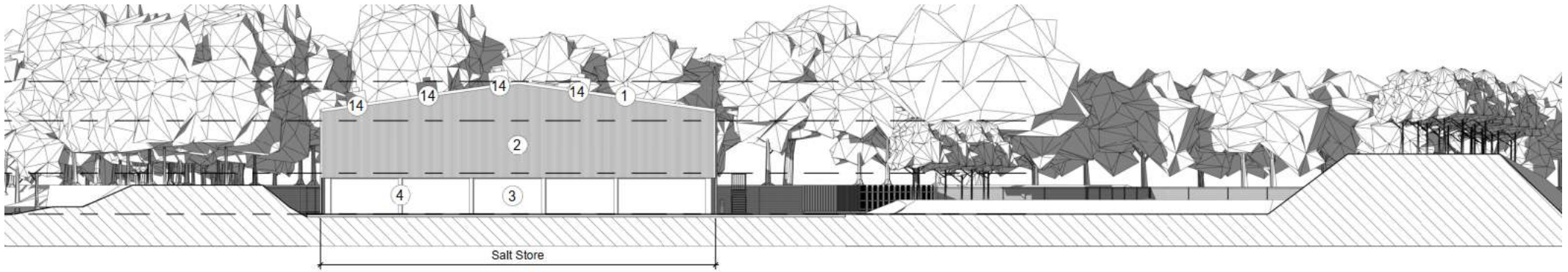
# Proposed south and north elevations



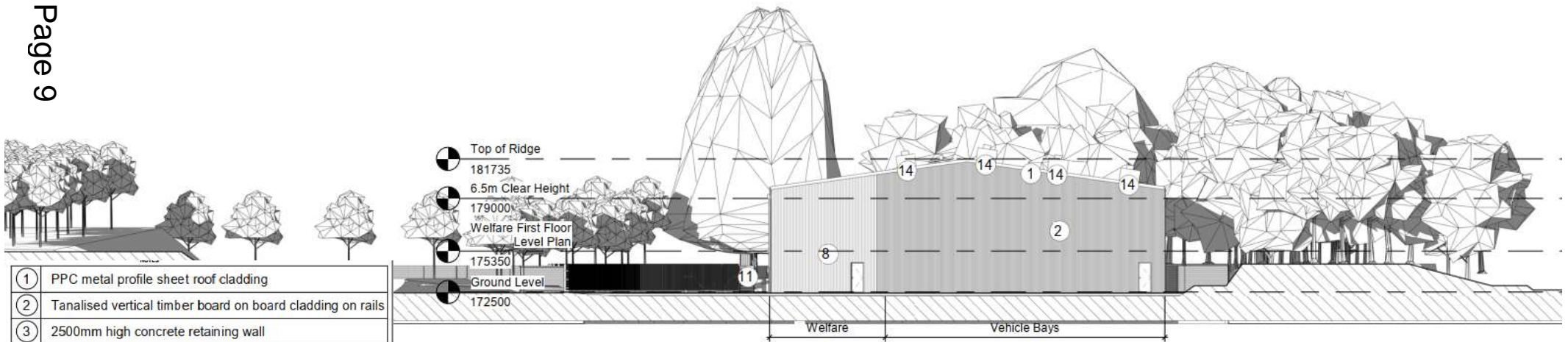
①	PPC metal profile sheet roof cladding
②	Tanalised vertical timber board on board cladding on rails
③	2500mm high concrete retaining wall
④	Concrete encased steel columns
⑤	Rainwater downpipes - PPC aluminium
⑥	Doors - PPC metal faced, ppc framed
⑦	Photo voltaic panels
⑧	PPC metal profile sheet wall cladding
⑨	Windows - PPC aluminium framed units
⑩	Industrial horizontal sliding door with inset personnel door
⑪	Washdown
⑫	Fuel Store
⑬	Battery Store
⑭	Roof Vents



# Proposed east and west elevations



Page 9

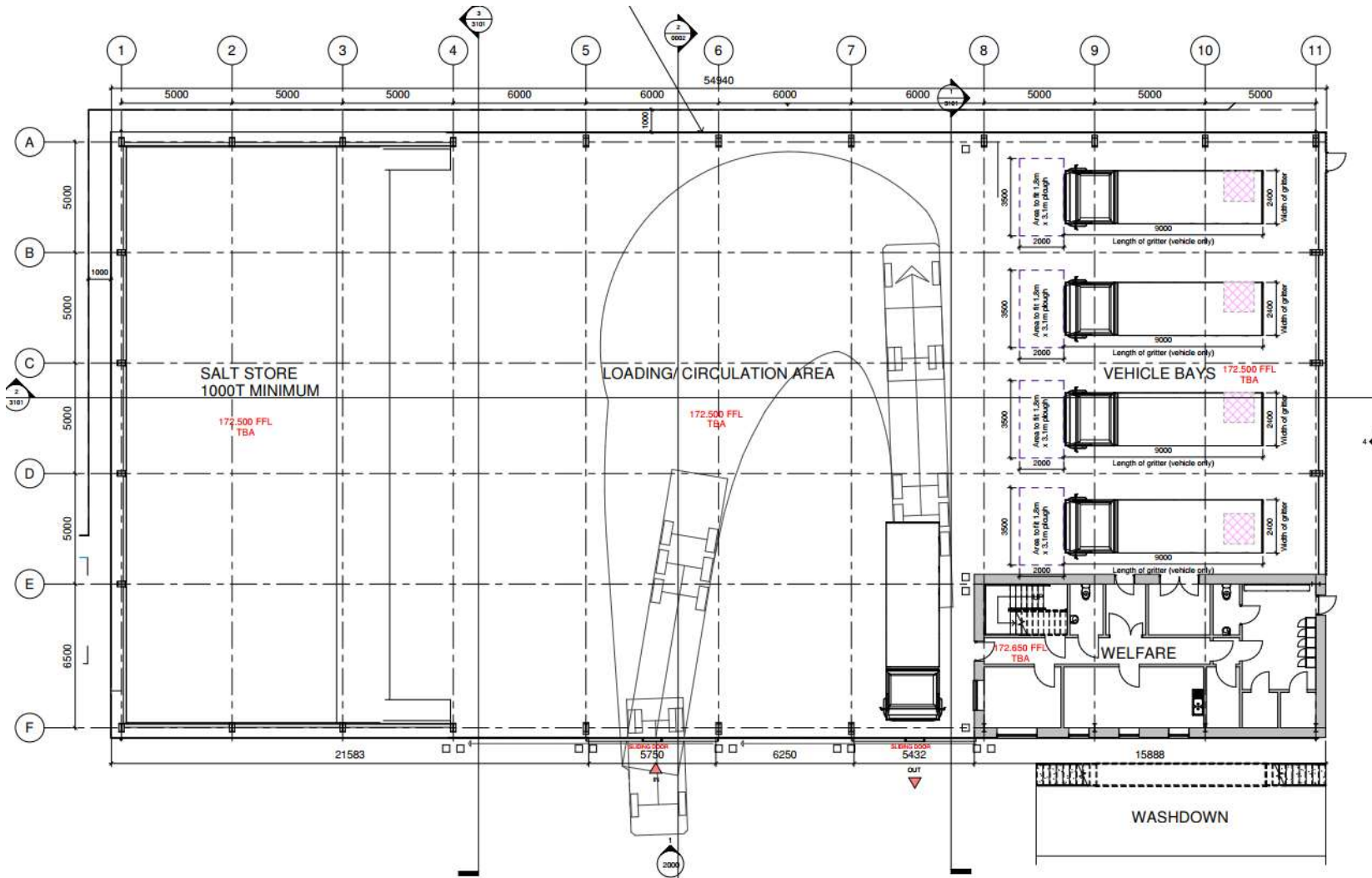


①	PPC metal profile sheet roof cladding
②	Tanalised vertical timber board on board cladding on rails
③	2500mm high concrete retaining wall
④	Concrete encased steel columns
⑤	Rainwater downpipes - PPC aluminium
⑥	Doors - PPC metal faced, ppc framed
⑦	Photo voltaic panels
⑧	PPC metal profile sheet wall cladding
⑨	Windows - PPC aluminium framed units
⑩	Industrial horizontal sliding door with inset personnel door
⑪	Washdown
⑫	Fuel Store
⑬	Battery Store
⑭	Roof Vents



# Proposed floor plan

Page 10



# Illustrative east perspective





# Illustrative west perspective

Page 12

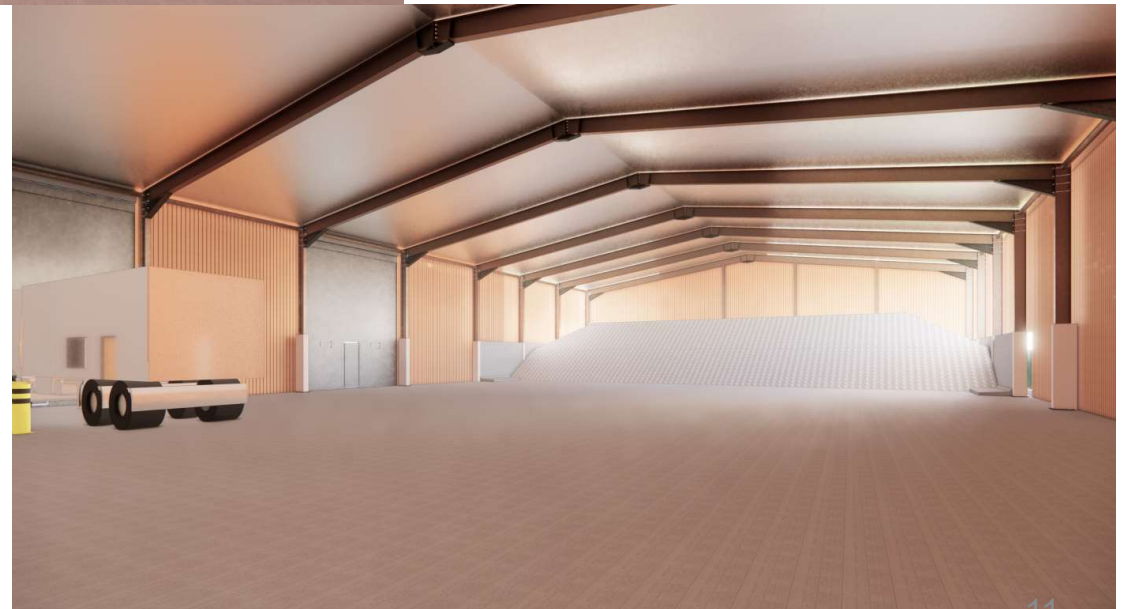




# Illustrative internal views of parking/welfare unit and salt store

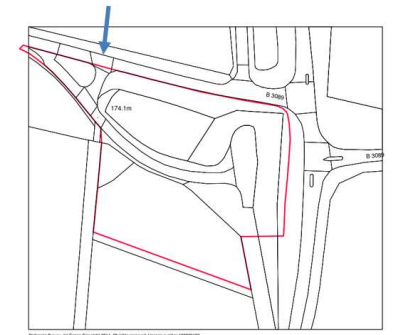


Page 13



# Photos of site access

Page 14



© 2014



# Photos looking west



# Looking north at south edge of site from A350





# Looking east

Page 17



# North side of site





# Photo on site

Page 19





# Photo on site

Page 20





# Photo on site

Page 21





# Photo on site

Page 22





# Photo on site

Page 23





# Photo on site

Page 24





# Photo on site

Page 25



# Photo on site

Page 26





# Photo on site

Page 27










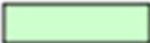





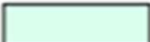



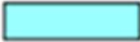


# Photo on site

Page 28



# Southern Area Planning Committee

27<sup>th</sup> July 2023

	New Highway Depot Building		Proposed Washdown
	Proposed Fence Line (2.4m high green welded mesh/ deer & rabbit proof)		Proposed Battery Store
	Proposed Bridleway Diversion		Proposed Soft Landscaping - Refer to NPA Landscape Proposals Plan for full details
	Proposed Hardstanding		Proposed Gravel Strip & Acoustic Barrier (2.2m high close boarded timber fence)
	Existing Hardstanding		Proposed Water Filtration - Approx. 2,385m <sup>2</sup>
	Proposed Salt Store, 1000T minimum - tarmac floor surface		Existing landscaping
	Proposed 4no. Vehicle Bays - tarmac floor surface		Existing tree canopy retained
	Proposed Welfare		Existing tree canopy to be removed
	Proposed Covered Circulation Space - concrete floor surface		Existing road
	Proposed Fuel		